

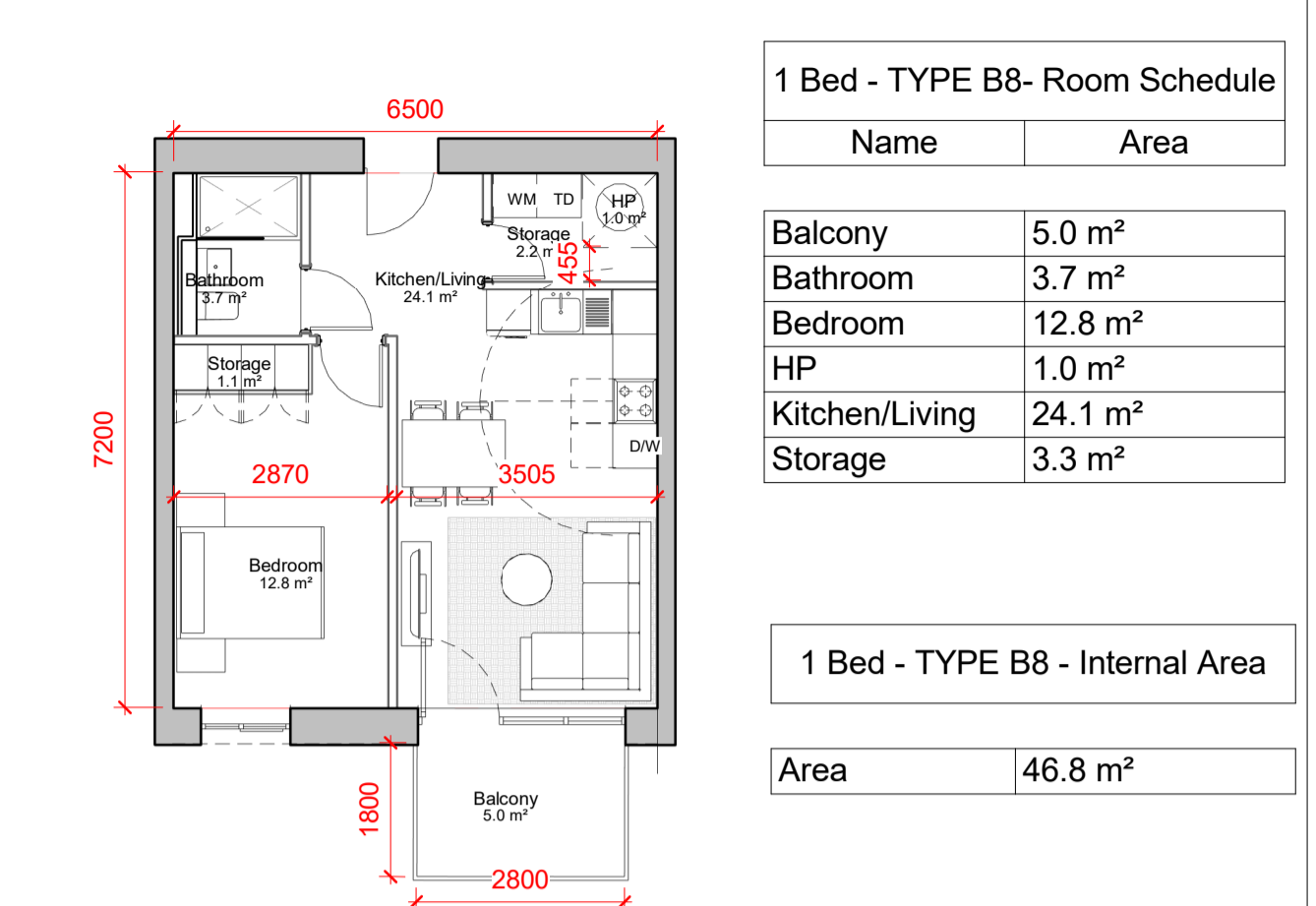
1 Bed - TYPE B7 - Room Schedule

Name	Area
Balcony	5.0 m ²
Bathroom	3.8 m ²
Bedroom	11.4 m ²
HP	1.0 m ²
Kitchen/Living	32.0 m ²
Storage	4.6 m ²

1 Bed - TYPE B7 - Internal Area

Area	55.6 m ²
------	---------------------

9 1 BED TYPE B7
1 : 100



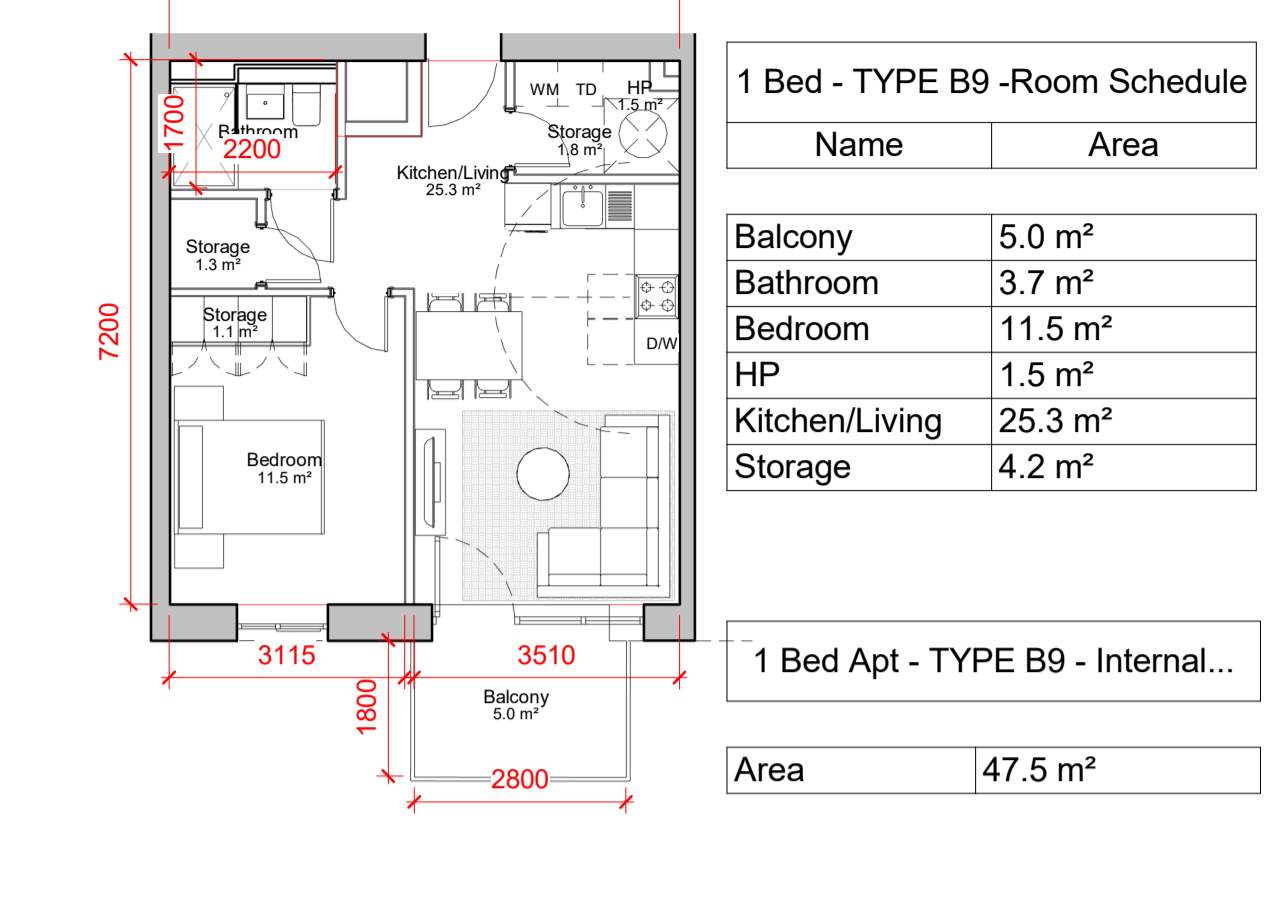
1 Bed - TYPE B8 - Room Schedule

Name	Area
Balcony	5.0 m ²
Bathroom	3.7 m ²
Bedroom	12.8 m ²
HP	1.0 m ²
Kitchen/Living	24.1 m ²
Storage	3.3 m ²

1 Bed - TYPE B8 - Internal Area

Area	46.8 m ²
------	---------------------

11 1 BED TYPE B8
1 : 100



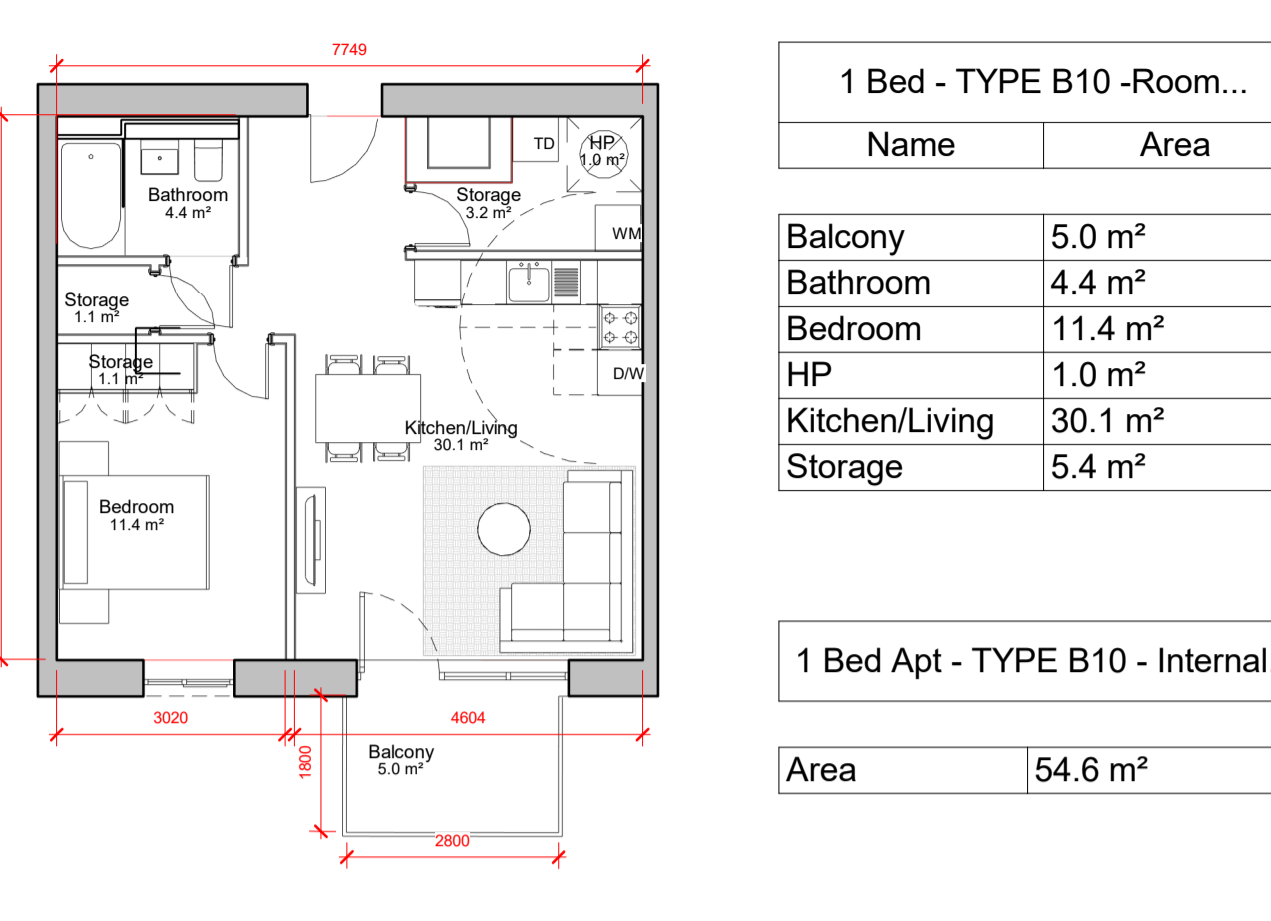
1 Bed - TYPE B9 -Room Schedule

Name	Area
Balcony	5.0 m ²
Bathroom	3.7 m ²
Bedroom	11.5 m ²
HP	1.5 m ²
Kitchen/Living	25.3 m ²
Storage	4.2 m ²

1 Bed Apt - TYPE B9 - Internal...

Area	47.5 m ²
------	---------------------

1 1 BED TYPE B9
1 : 100



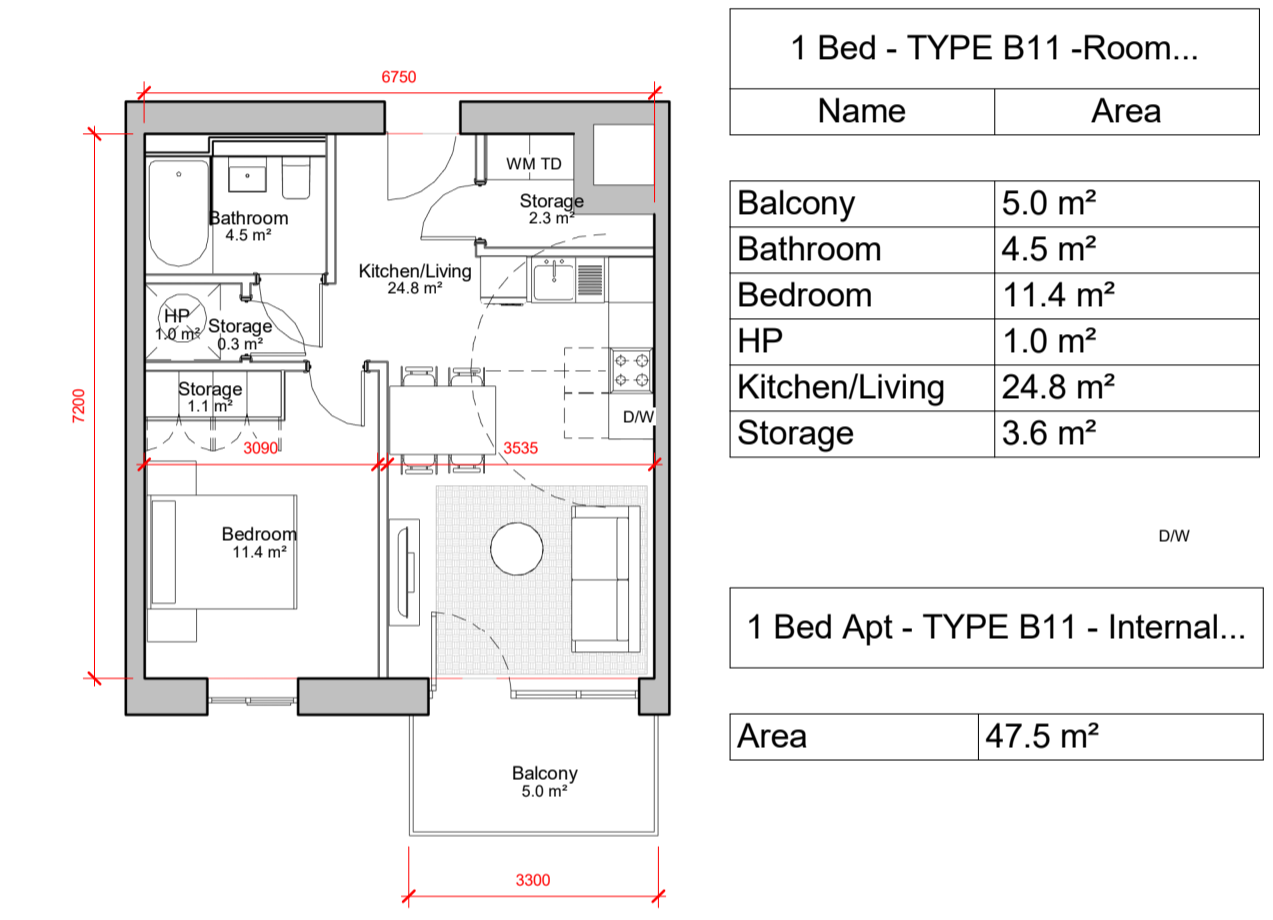
1 Bed - TYPE B10 -Room...

Name	Area
Balcony	5.0 m ²
Bathroom	4.4 m ²
Bedroom	11.4 m ²
HP	1.0 m ²
Kitchen/Living	30.1 m ²
Storage	5.4 m ²

1 Bed Apt - TYPE B10 - Internal...

Area	54.6 m ²
------	---------------------

2 1 BED TYPE B10
1 : 100



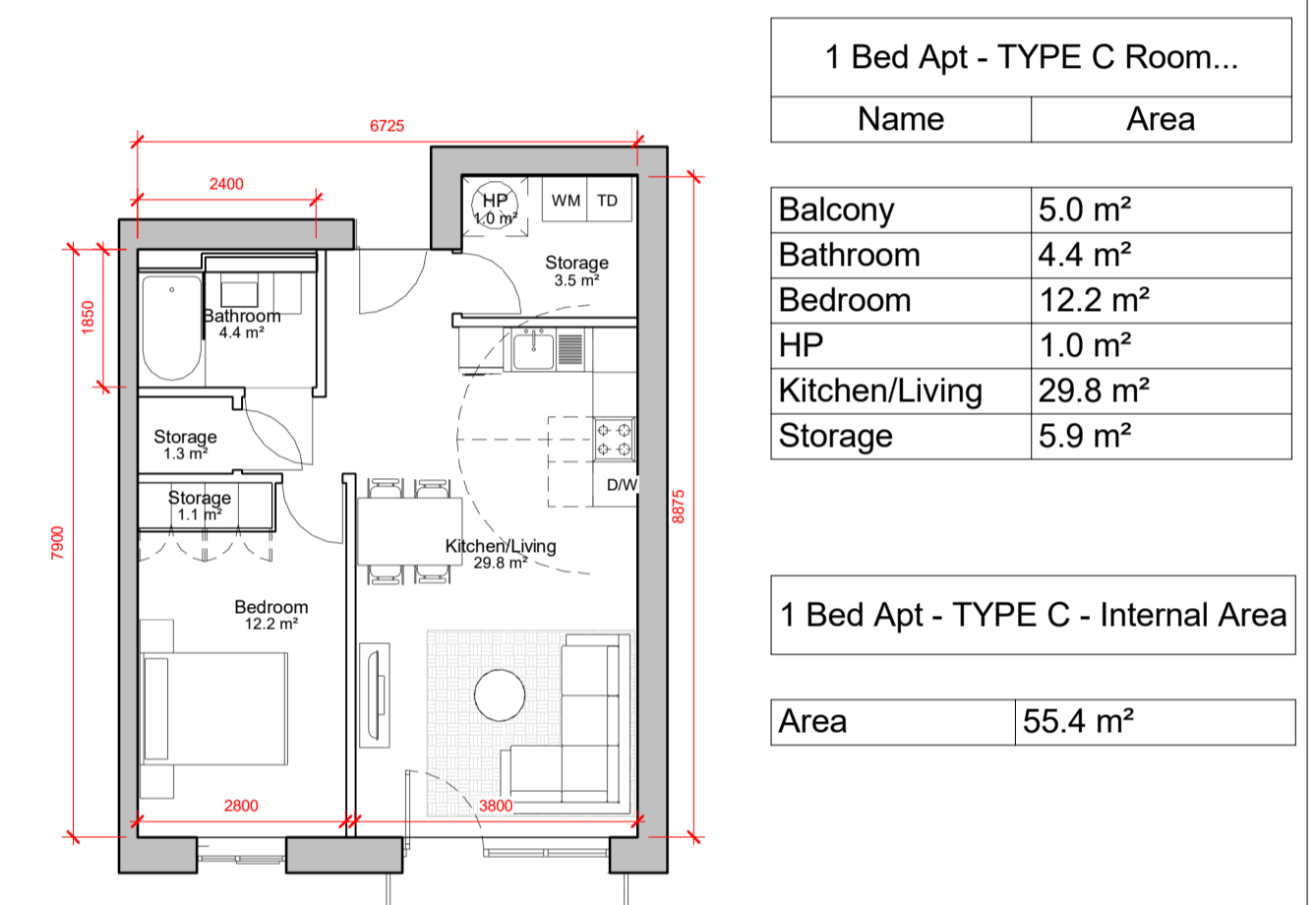
1 Bed - TYPE B11 -Room...

Name	Area
Balcony	5.0 m ²
Bathroom	4.5 m ²
Bedroom	11.4 m ²
HP	1.0 m ²
Kitchen/Living	24.8 m ²
Storage	3.6 m ²

1 Bed Apt - TYPE B11 - Internal...

Area	47.5 m ²
------	---------------------

10 1 BED TYPE B11
1 : 100



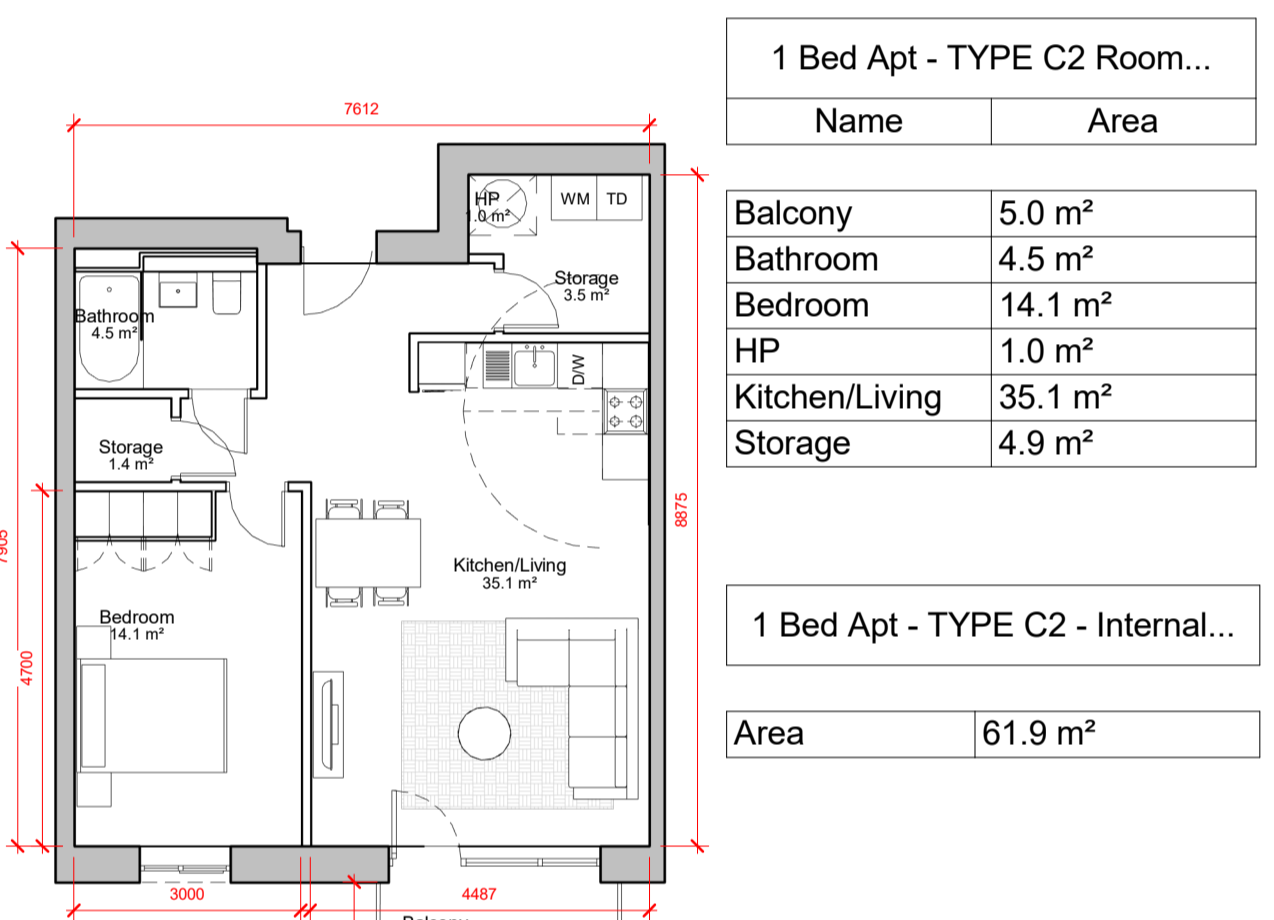
1 Bed Apt - TYPE C Room...

Name	Area
Balcony	5.0 m ²
Bathroom	4.4 m ²
Bedroom	12.2 m ²
HP	1.0 m ²
Kitchen/Living	29.8 m ²
Storage	5.9 m ²

1 Bed Apt - TYPE C - Internal Area

Area	55.4 m ²
------	---------------------

3 1 BED TYPE C
1 : 100



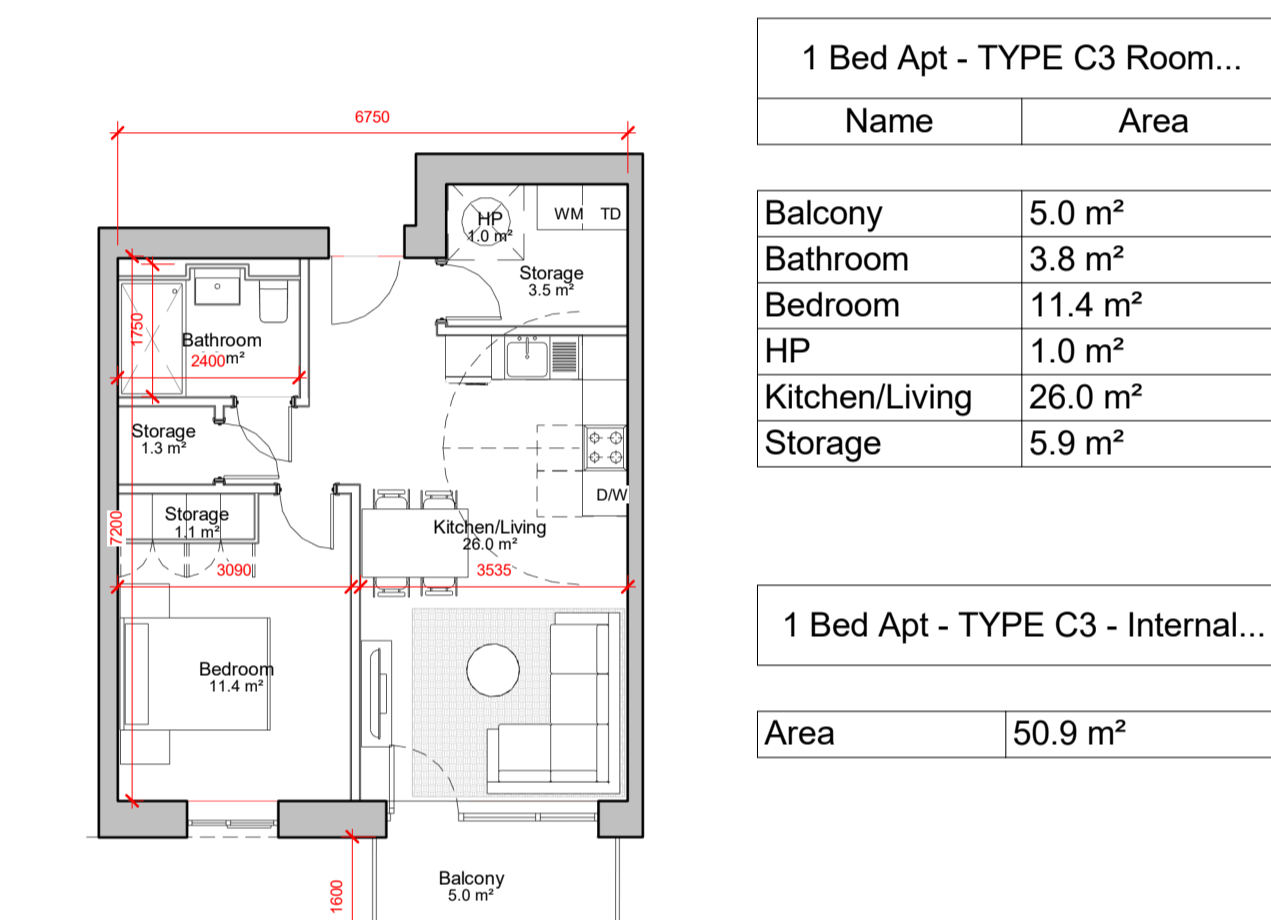
1 Bed Apt - TYPE C2 Room...

Name	Area
Balcony	5.0 m ²
Bathroom	4.5 m ²
Bedroom	14.1 m ²
HP	1.0 m ²
Kitchen/Living	35.1 m ²
Storage	4.9 m ²

1 Bed Apt - TYPE C2 - Internal...

Area	61.9 m ²
------	---------------------

4 1 BED TYPE C2
1 : 100



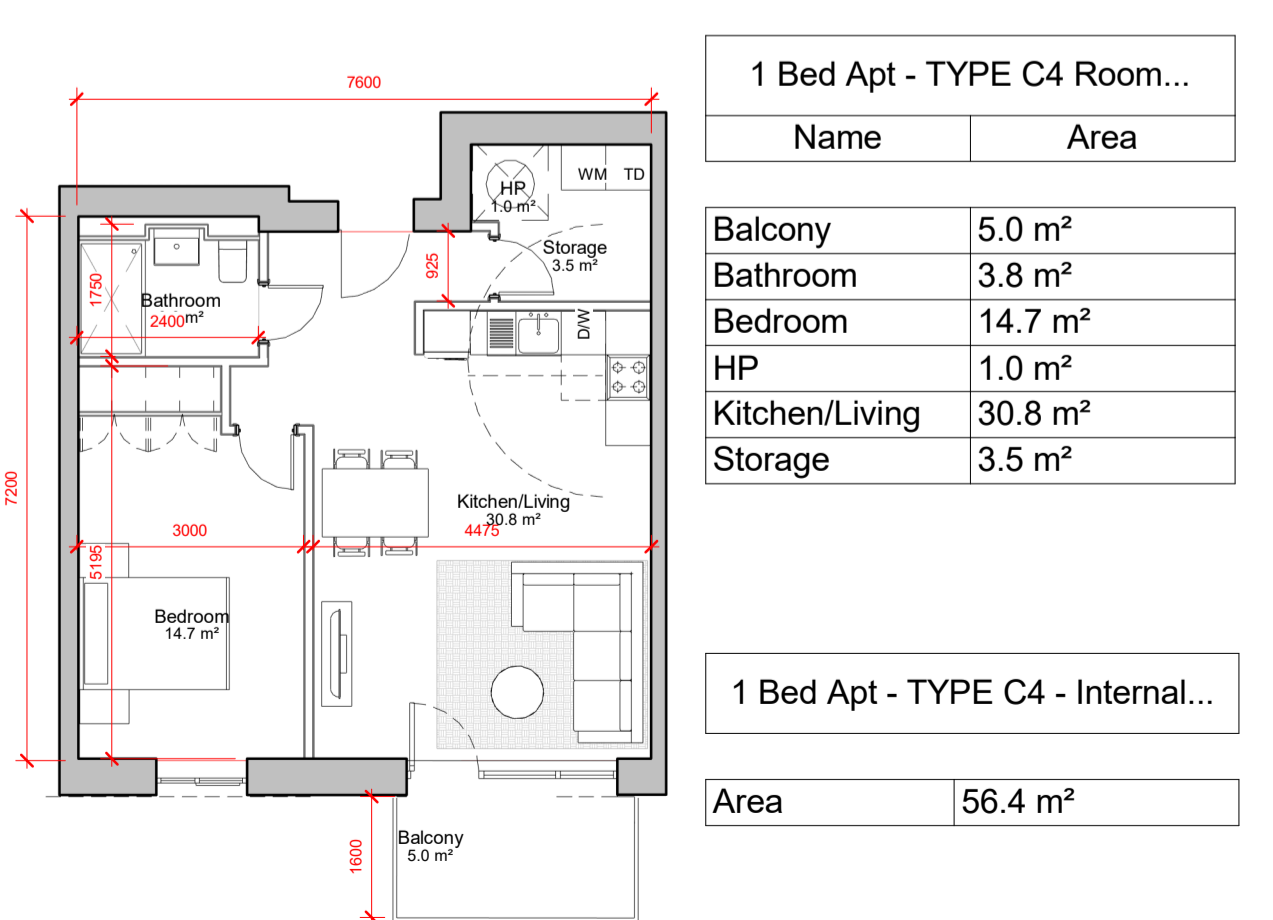
1 Bed Apt - TYPE C3 Room...

Name	Area
Balcony	5.0 m ²
Bathroom	3.8 m ²
Bedroom	11.4 m ²
HP	1.0 m ²
Kitchen/Living	26.0 m ²
Storage	5.9 m ²

1 Bed Apt - TYPE C3 - Internal...

Area	50.9 m ²
------	---------------------

5 1 BED TYPE C3
1 : 100



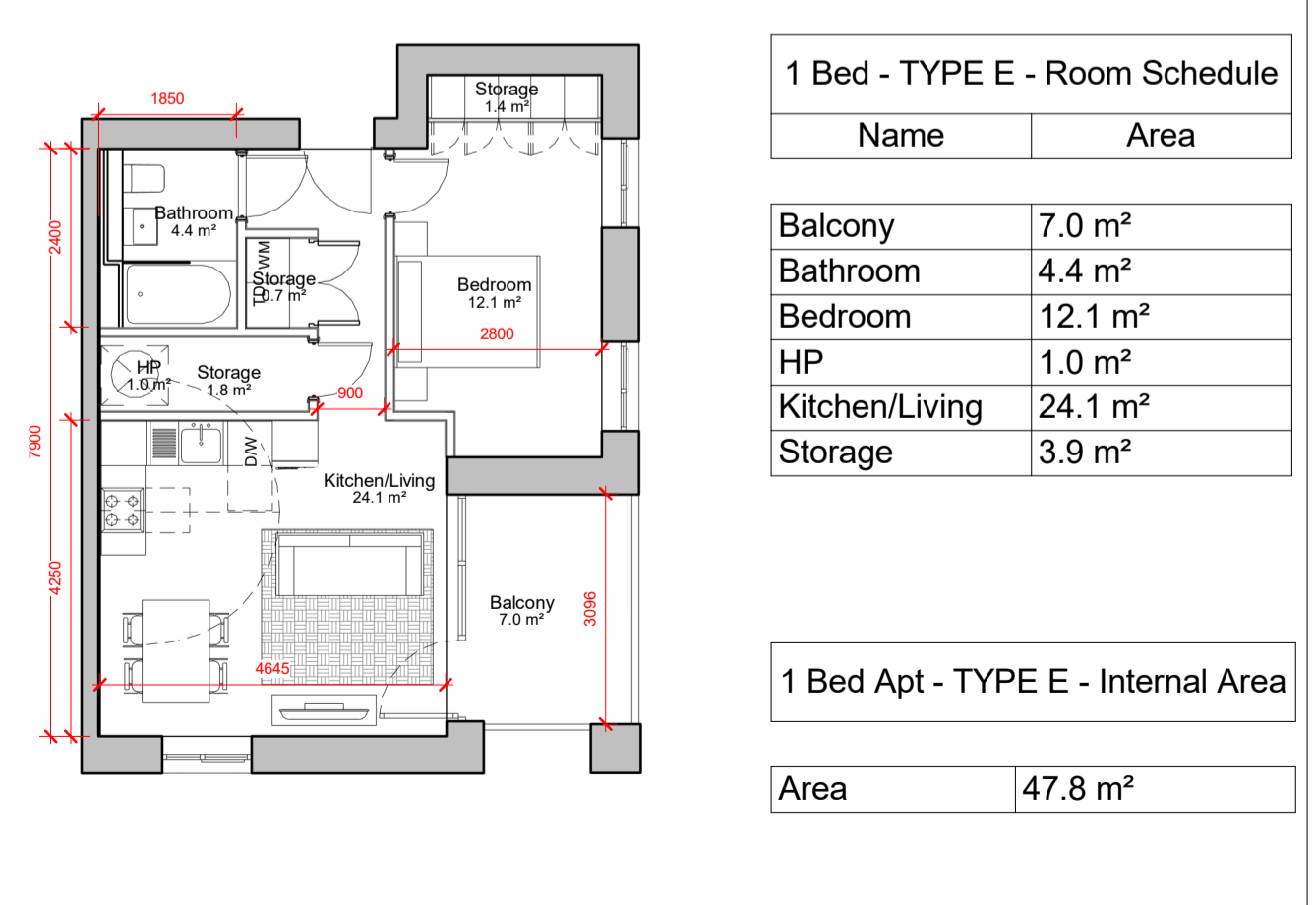
1 Bed Apt - TYPE C4 Room...

Name	Area
Balcony	5.0 m ²
Bathroom	3.8 m ²
Bedroom	14.7 m ²
HP	1.0 m ²
Kitchen/Living	30.8 m ²
Storage	3.5 m ²

1 Bed Apt - TYPE C4 - Internal...

Area	56.4 m ²
------	---------------------

6 1 BED TYPE C4
1 : 100



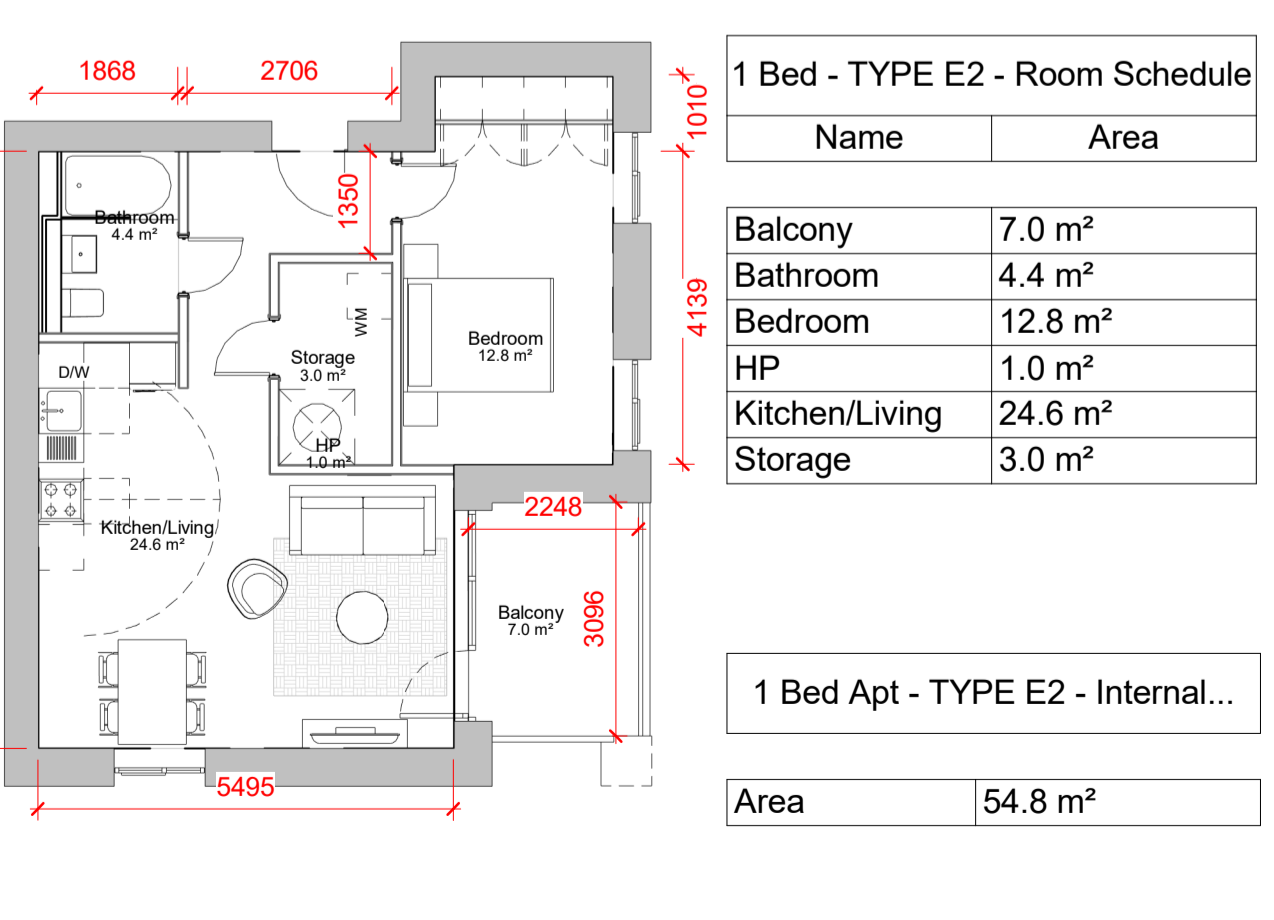
1 Bed - TYPE E - Room Schedule

Name	Area
Balcony	7.0 m ²
Bathroom	4.4 m ²
Bedroom	12.1 m ²
HP	1.0 m ²
Kitchen/Living	24.1 m ²
Storage	3.9 m ²

1 Bed Apt - TYPE E - Internal Area

Area	47.8 m ²
------	---------------------

7 1 BED TYPE E
1 : 100



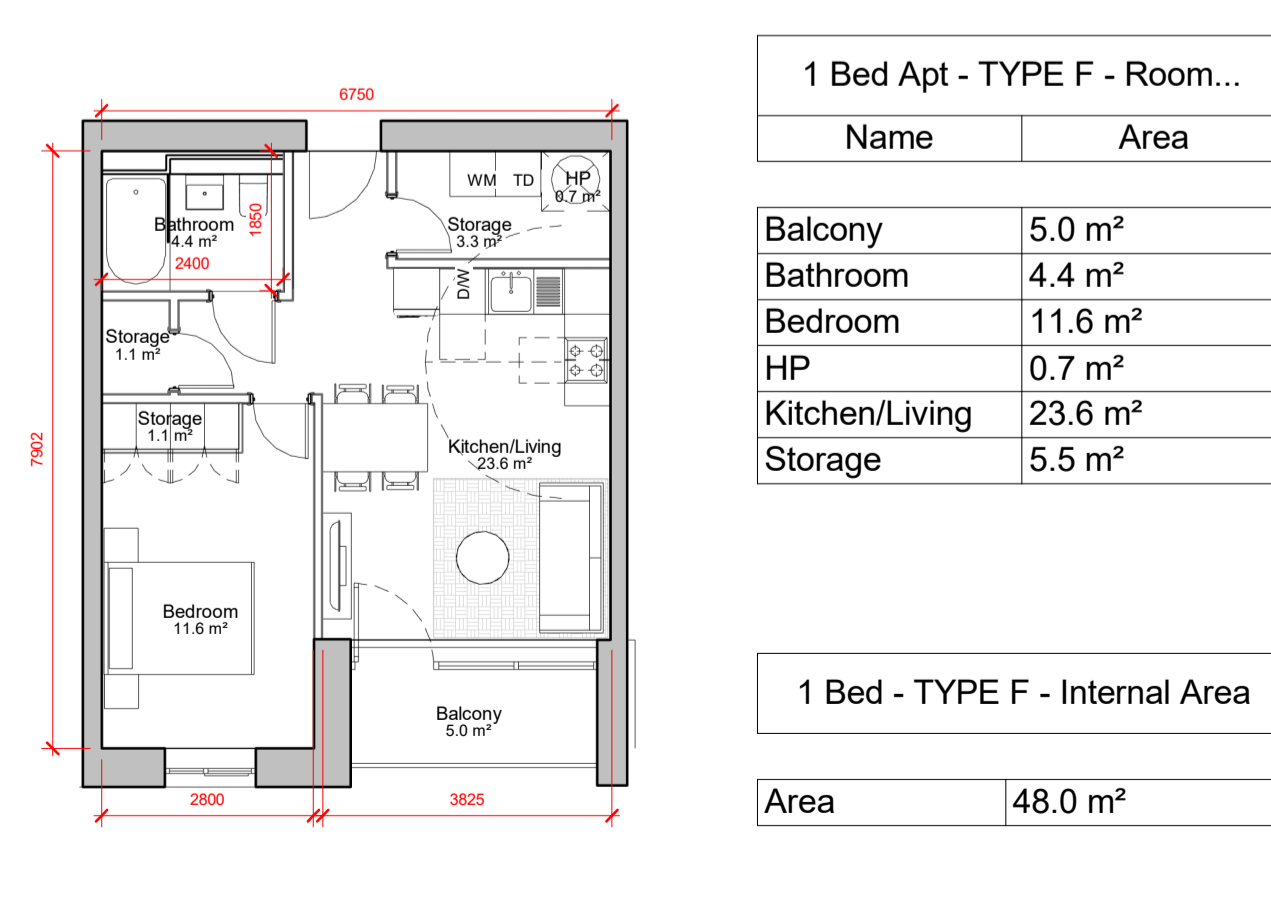
1 Bed - TYPE E2 - Room Schedule

Name	Area
Balcony	7.0 m ²
Bathroom	4.4 m ²
Bedroom	12.8 m ²
HP	1.0 m ²
Kitchen/Living	24.6 m ²
Storage	3.0 m ²

1 Bed Apt - TYPE E2 - Internal...

Area	54.8 m ²
------	---------------------

12 1 BED TYPE E2
1 : 100



1 Bed Apt - TYPE F - Room...

Name	Area
Balcony	5.0 m ²
Bathroom	4.4 m ²
Bedroom	11.6 m ²
HP	0.7 m ²
Kitchen/Living	23.6 m ²
Storage	5.5 m ²

1 Bed - TYPE F - Internal Area

Area	48.0 m ²
------	---------------------

8 1 BED TYPE F
1 : 100

P1	18/06/2021	ISSUED FOR PLANNING	RC
REV	DATE	DESCRIPTION	CKH DRN

STATUS CODE DESCRIPTION
ISSUED FOR PLANNING APPROVAL

CLIENT
THE SHORELINE PARTNERSHIP

PROJECT
PROJECT SHORELINE BALDOYLE GA03

DRAWING
1 BED APARTMENTS

PROJECT NUMBER
950659

DATE
06/22/21

SCALE@ A1:
1 : 100

DRAWN/CHECKED:
Author/ Checker

STATUS CODE: DRAWING NUMBER REVISION
A1 950659-P-1901 P1

Henry J Lyons
Architecture + Interiors
henrylyons.com

+353 1 888 3333
info@henrylyons.com

51-54 Pearse Street
Dublin D02 KA66